

Format and Expectations

This six-day training combines lecture and presentation of theory, reading, discussion, group and partner work, modeling and demonstration of coaching strategies, written and verbal reflection, and practice and feedback. Participants will work in triads with opportunities to coach peers, observe peer coaches, receive coaching from peers, and give and receive feedback.

Following the second session, participants will enroll a coaching client and conduct a minimum of five coaching sessions with the client outside of class between sessions two and six.

For Questions

Contact Heidi Laabs
laabsh@wisconsinrtlicenter.org
608-617-7946



WISCONSIN
Rtl Center

IDEA CFDA 84.027

Prerequisites

- An in-depth understanding of Wisconsin's vision of RtI and PBIS. Participants must have attended either PBIS C100 New Coaches Orientation: Nuts and Bolts or the Wisconsin RtI Foundational Overview, or be registered to attend one of these trainings this year
- Commitment to implementation of a systems coaching model as part of the Wisconsin RtI Framework

Graduate Credit

Three graduate credits will be available. Attendance at all six sessions are required for credit and to receive a certificate of completion. Information on cost and additional assignments will be shared at first session.

Cost

\$300 per participant. Fee includes breakfast, lunch, materials, and texts for all six sessions.

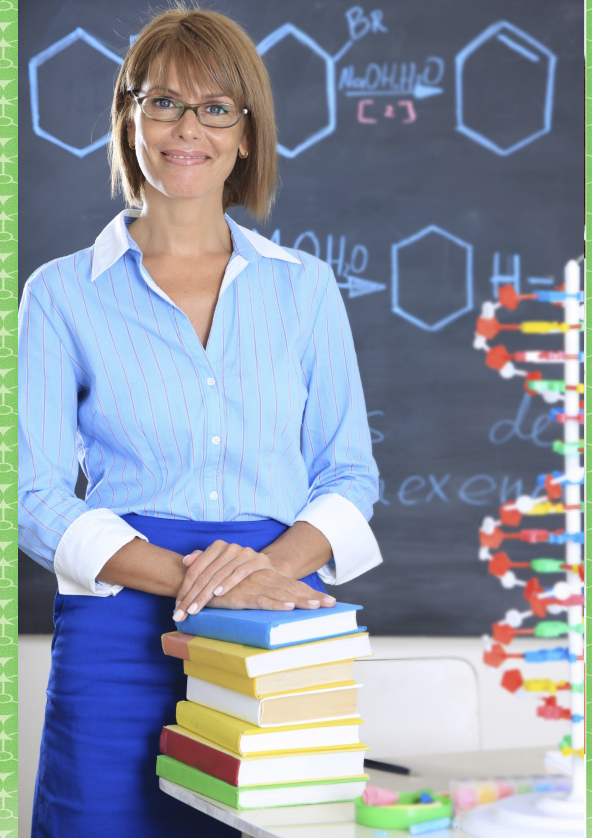
WisconsinRtlCenter.org



WISCONSIN
Rtl Center

IDEA CFDA 84.027

Systems Coaching in a RtI Framework



WisconsinRtlCenter.org

Systems Coaching in a Rtl Framework

2012-2013 Dates

Wausau Cohort

Oct. 5, Nov. 9, Dec. 7, Jan. 11, Feb. 15, March 15

Milwaukee Cohort 1

Oct. 1, Nov. 5, Dec. 3, Jan. 7, Feb. 4, March 4

Wisconsin Dells Cohort

Oct. 3, Nov. 7, Dec. 5, Jan. 9, Feb. 13, March 20

Madison Cohort

Dec. 11, Jan. 15, Feb. 19, March 19, April 23, May 21

Milwaukee Cohort 2

Dec. 13, Jan. 17, Feb. 21, March 21, April 25, May 23

Kenosha Cohort

Dec. 14, Jan. 25, March 1, March 22, May 3, May 24

Turtle Lake Cohort

Jan. 28, Feb. 18, March 13, April 9, May 7, May 30

Specific location, registration, and other session details can be found on our calendar at www.wisconsinrticenter.org/event/all.html.

Purpose

To train coaches to support schools and districts in the implementation of all aspects of systems change through the Wisconsin Rtl Framework.

Who should attend

Principals, central office leaders, teacher leaders, internal and external coaches.

Participants will

- Learn and practice strategies for coaching systems change in a Wisconsin Rtl Framework; for supporting the implementation of Rtl for behavior (PBIS), reading and/or math at the universal, selected, and intensive levels with mastery and fidelity; and for coaching teams and individuals implementing a Wisconsin Rtl Framework.
- Develop and practice effective coaching skills and dispositions that include listening, questioning, self-management, curiosity, build-

ing trust, encouraging reflective practice, giving feedback, creating partnerships, and facilitating change.

- Learn and use the steps in the coaching format, including getting started, determining goals, identifying possibilities and obstacles, action planning, and committing to action.
- Understand the mentoring-coaching continuum and differentiate coaching strategies and styles in response to teacher knowledge, skills and needs, stages of implementation of change, and levels of team development.
- Establish coaching as the capstone of a systematic, articulated professional development plan that is aligned with goals and plans for improved student learning.